

FS-1370DN

► print ► copy ► scan ► fax

MONOCHROME DESKTOP PRINTER FOR A4 FORMAT

THE HIGH PERFORMANCE DESKTOP PRINTER.

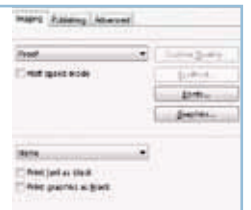
Fast and efficient, the FS-1370DN has a silent-printing option that makes it the ideal printer for your desktop. Featuring network connectivity, excellent security standards, a large memory and fast printing capabilities, it easily copes with larger print volumes. The clarity of the LCD control panel ensures that operation is always especially user-friendly. Robust, highly reliable and very economical, the FS-1370DN is a printer you can count on.

- Up to 35 pages per minute in A4
- Standard duplex functionality for double-sided printing
- Max. paper capacity of up to 800 sheets
- PowerPC 440F5 / 500 MHZ, up to 1,152 MB RAM
- USB and network connectivity as standard
- Highly reliable thanks to long-life components
- Noise level regulation
- Exceptionally low printing costs

Easy-to-understand full dot LCD display for exceptional ease of use.



By printing in half-speed mode you can reduce the noise level and enjoy the benefit of silent operation.



FS-1370DN

MONOCHROME DESKTOP PRINTER FOR A4 FORMAT



ECOSYS stands for ECOlogy,
ECONomy and SYStem-printing.

With their long-life components, ECOSYS devices are designed to maximise durability and minimise the total cost of ownership with regard to maintenance, administration and consumables. The cartridge-free system means that only the toner has to be replaced regularly. The modular design concept allows you to add workflow-enhancing functions as required. Integrated system software provides long-term cross-network compatibility. KYOCERA's long-life components cost you and the environment less.

PRESCRIBE II

With the KYOCERA page design and control language PRESCRIBE II, even complex graphics, logos and forms (multipart forms) can be created independently on the system and saved and updated in the printer. Consequently, integration into print files no longer applies. They are only accessed as required and therefore relieve the load on the network.

The KM NetViewer

The KM NetViewer enables complete monitoring and control of all ECOSYS printers and digital KYOCERA multifunction units from any Windows® PC and thus provides ideal network administration. It also supports the standardised SNMP protocol.

Status Monitor and Command Center

The Status Monitor shows the current printers condition and gives direct access to the Command Center for the modification of settings that are not contained in the drivers (e.g. network settings, adjustment of sleep mode or blocking of the control panel).

General

Technology

KYOCERA ECOSYS Laser

Engine speed

Up to 35 pages per minute in A4

Resolution

Fine 1,200 dpi

Duty cycle

Max. 50,000 pages per month

Max. average 2,800 pages per month

Warm-up time

Approx. 19 seconds or less from power on

Time to first page

Approx. 7 seconds or less

Dimensions (W x D x H)

375 mm x 393 mm x 267 mm

Weight

Approx. 12 kg (main unit)

Power source

220/240 V, 50/60 Hz

Power consumption

Printing: 554 W

Stand-by: 11 W

Power-Saving (ECOpower): 5.5 W

Noise (ISO 7779 / ISO 9296)

Printing in full-speed mode: 55 dB(A)

Printing in half-speed mode: 49 dB(A)

Stand-by: 30 dB(A)

Safety standards

GS, TÜV, CE

This unit is manufactured according to ISO 9001 quality standard and ISO 14001 environmental standard.

Paper handling

All paper capacities quoted are based on a paper thickness of max. 0.11 mm. Please use paper recommended by KYOCERA under normal environmental conditions.

Input capacity

50-sheet multi-purpose tray; 60-220 g/m²;

A4, A5, A6, B5, Letter, Legal, Custom

(70 x 148 - 215,9 x 356 mm)

250-sheet universal paper cassette, 60-120 g/m²;

A4, A5, A6, B5, Letter, Legal, Custom

(105 x 148 mm - 215.9 x 297 mm)

Max. input capacity incl. options: 800 sheets A4

Duplex functionality

Duplex as standard supports 60-105 g/m²

Output capacity

250 sheets face-down

Controller

CPU

PowerPC 440F5/500 MHz

Memory

128 MB RAM + ECOMemory + 1,024 MB in 1 DDR SDRAM

DIMM slot

Standard interface

USB 2.0 (Hi-Speed), 10BASE-T/100BASE-TX, KUIO/W interface slot,

USB Host Interface dedicated for USB Flash

Controller language

PRESCRIBE II

Emulations

PCL6/PCL5e incl. PJI, KPDL 3 (PostScript 3 compatible) with automatic emulation sensing (AES), Line Printer, IBM Proprinter X24E, Epson LQ-850, Diablo 630, slot for optional internal print server, PDF Direct Print, XPS

Operating systems

All current Windows operating systems,

Mac OS X Version 10.2 or higher,

UNIX, LINUX as well as other operating systems on request

Fonts/Barcodes

80 outline fonts accessible in all emulations,

1 bitmap font, 45 types of one-dimensional barcodes plus

two-dimensional barcode PDF-417,

Downloadable fonts: KYOCERA, PCL + TrueType format,

Type 1 + 3 format

Consumables

TK-170 Toner-Kit

Microfine toner for 7,200 pages A4 in accordance

with ISO/IEC 19752

Capacity of starter toner is 2,300 pages A4 in accordance

with ISO/IEC 19752

Options

PF-100 Paper feeder (max. 2 units)

Max. 250 sheets; 60-120 g/m²; A4, A5, B5, Letter, Legal,

Custom (148 x 210 mm - 215.9 x 297 mm)

CB-130 Cabinet

Desk with storage capacity

Memory upgrade

1 SDRAM DIMM slot (128, 256, 512 MB, 1 GB)

CompactFlash* card

1 slot (up to 4 GB) for printing forms, fonts, logos, macro

storage

Optional interface

PS159: Wireless LAN (802.11b/g)

PS1109 Gigabit Ethernet:

10BaseT / 100BaseTX / 1000BaseT (RJ-45)

PS129 Fibre Optic: 100BaseSX (SC)

PS1129 Gigabit Fibre Optic: 1000BaseSX (SC)

Model variations

FS-1370DN/KL3

FS-1370DN incl. warranty extension KYOLife 3 years

Maintenance

MK-170 Maintenance-kit: 100,000 pages

Warranty

2-year warranty as standard.

KYOCERA guarantees the drum and developer for 3 years or maximum 100,000 pages (whichever occurs sooner), provided each printer is used and cleaned in accordance with the service instructions.

KYO LIFE The up to 3-year on-site warranty extension for printer and options.



Your KYOCERA Business Partner:

KYOCERA MITA Belgium nv/sa - Sint-Martinusweg 199-201 - 1930 ZAVENTEM

Tel +32 (0)2 720 92 70 - Fax +32 (0)2 713 08 75

www.kyoceramita.be - info@kyoceramita.be

KYOCERA MITA Corporation - 2-28, 1-Chome - Tamatsukuri - Chuo-Ku

Osaka 540-8585 - Japan - www.kyoceramita.com

* KYOCERA does not warrant that any specifications mentioned will be error-free. Specifications are subject to change without notice. Information is correct at time of going to press. All other brand and product names may be registered trademarks or trademarks of their respective holders and are hereby acknowledged.



Product depicted includes optional extras.

KYOCERA