

## SYSTEM REQUIREMENTS

IBM-compatible PC with 1GHz CPU or higher, 512 MB RAM, 300 MB of free hard disk space,  
DVD-ROM drive for installation

**Operating systems:** Windows® 2000, XP, 2003, Vista, 2008.

Microsoft .NET framework 2.0 required

**Supported technologies:** KYOcount 5.0 offers optional installation with Microsoft SQL Express.

Also, it can be integrated with existing Microsoft SQL servers.

**KYO Local Agent** is suitable for locally connected KYOCERA devices, except GDI devices.

For further information please visit: [www.kyocount.com](http://www.kyocount.com)

Your KYOCERA Business Partner:

0810BRE\_KYOcount\_EMC  
KYOCERA MITA Europe B.V. – Branch Office Germany – Otto-Hahn-Straße 12 – 40670 Meerbusch – Germany  
Tel +49 (0) 2159 928-500 – Fax +49 (0) 2159 918-100  
[www.kyoceramita-europe.com](http://www.kyoceramita-europe.com) – [info@kyoceramita-europe.com](mailto:info@kyoceramita-europe.com)

KYOCERA MITA Corporation – 2-28, 1-Chome – Tamatsukuri – Chuo-Ku  
Osaka 540-8585 – Japan – [www.kyoceramita.com](http://www.kyoceramita.com)

KYOCERA does not warrant that any specifications mentioned will be error-free. Specifications are subject to change without notice. Information is correct at time of going to press. All other brand and product names may be registered trademarks or trademarks of their respective holders and are hereby acknowledged. KYOcount™ is a trademark of KYOCERA MITA Europe B.V.



COUNT ON US.



**KYO COUNT**

FLEET MANAGEMENT SOFTWARE



ALL INFORMATION TO  
MANAGE A FLEET MOST EFFICIENTLY.

# BE IN TOTAL CONTROL OF YOUR FLEET.



What is the volume of pages that is printed in your company every month? Are all of your output devices being used efficiently? Do you always know the exact status of your entire fleet?

Only precise answers to these questions can create a productive output environment with efficient device usage. And a well-maintained fleet contributes significantly to the productivity and profitability of any company. With KYOcount 5.0, the tool for professional fleet management, an optimised fleet is only a few clicks away.

KYOcount is an application for the monitoring, analysis and management of printers, copiers and MFPs. And that's not all. On top of that it supports accounting functions of KYOCERA devices, like the discovery of device-based accounts and the use of account management functionality. An ideal solution for small and mid-size companies.

However, KYOcount offers even more. The fleet can be centrally managed from one location: the ideal solution for enterprise companies or companies with different locations.

## MONITOR, ANALYSE, MANAGE – WITH KYOCOUNT.

With KYOcount, you have access to relevant information to ensure the efficient use of resources. The software not only automatically recognises all networked and local devices (KYO Local Agent required), but also collects their output volumes. Counter readings can be divided into print, copy, scan and fax volumes and even split up according to colour, b/w and A3 to A5 formats.\*

The counter readings offer a good basis for usage analysis. The comprehensive reporting functionality enables you to create individual device, volume and usage reports matched to your requirements. Your advantage: if reports show that a device is currently or generally overloaded or often out of order, you can react quickly by, for example, exchanging it. The result is a more efficient fleet.

KYOcount monitors the status of every device in real time and notifies you quickly and reliably by e-mail in the case of device or system-related events, such as low toner levels or error messages. As a result, unproductive downtimes can be reduced to a minimum.

Event notifications can be configured in any way you like. If, for example, you determine that in the case of low toner levels the authorised dealer should be informed, the notification e-mail can automatically be sent to the dealer and your IT administrator simultaneously. The dealer can then deliver new toner even before the old toner is empty, contributing further to a smooth fleet operation without downtimes.

As a result, with KYOcount you will save time and money and increase the efficiency of your output environment.

\*Supports KYOCERA devices plus all device information contained in public MIBs

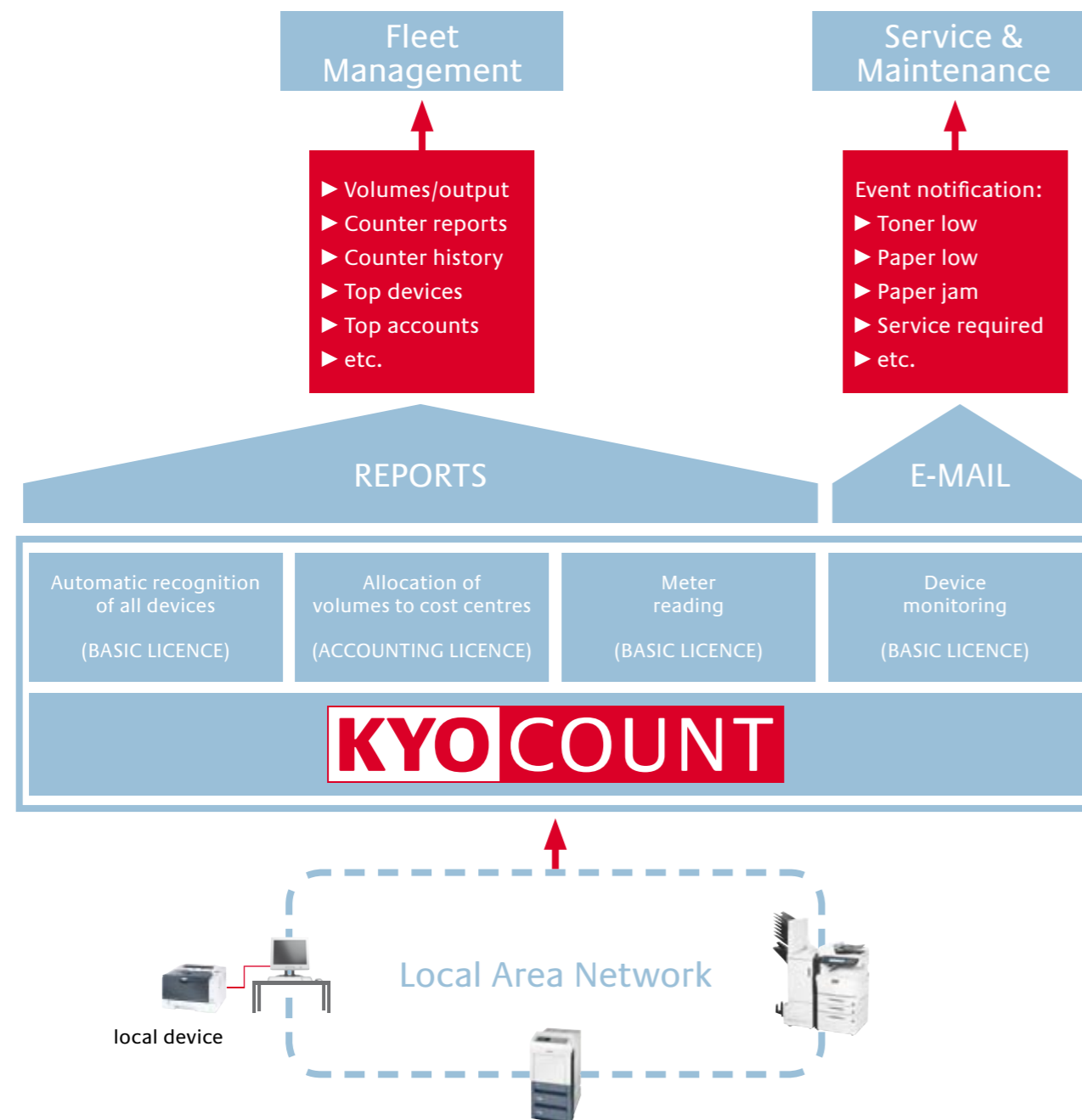
## YOUR ADVANTAGES AT A GLANCE:

- ▶ Reduced fleet administration effort
- ▶ Optimised use of resources
- ▶ Increased workflow efficiency by reduced device downtimes
- ▶ Vendor-independent device discovery
- ▶ Professional data presentation
- ▶ Centralisation and outsourcing option

## TRACK, ANALYSE AND REDUCE COSTS – COST ACCOUNTING.

The detailed tracking, analysis and management of costs is an essential challenge for every company. The KYOcount Accounting Licence provides a multitude of accounting functions to do exactly that. For example, it enables you to allocate volumes to specific cost centres. KYOcount's comprehensive reporting functionality also allows you to draw up analyses and comparative overviews.

## FUNCTIONALITY AT A GLANCE:



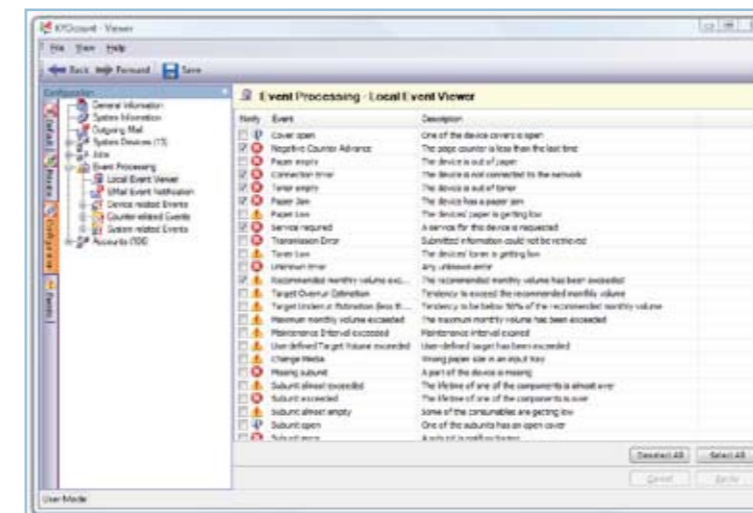
# CENTRALISE AND OPTIMISE – WITH REMOTE MONITORING.

The KYOcount Basic Licence and optional Accounting Licence will serve small to mid-size companies well.

However, for larger companies with different locations, fleet management is ever more complex. The best solution in such cases is then often to either centralise or outsource. KYOcount provides both options.

The KYOcount Manager and Connect Licences will enable you to monitor your entire network from a central location. All you have to do is install a Manager Licence on your server and one Connect Licence with each client (Basic Licence) for the connection to the various locations. System reports of all data recorded by KYOcount will be sent to the KYOcount Manager system in user-defined intervals, offering remote monitoring of the company-wide fleet.

A KYOcount Manager system offers remote access to all data recorded by KYOcount. This will, for example, enable you to recognise when a device is permanently overloaded and to take countermeasures, such as exchanging the device. It also enables you to optimise the maintenance cycles according to the respective counter readings.



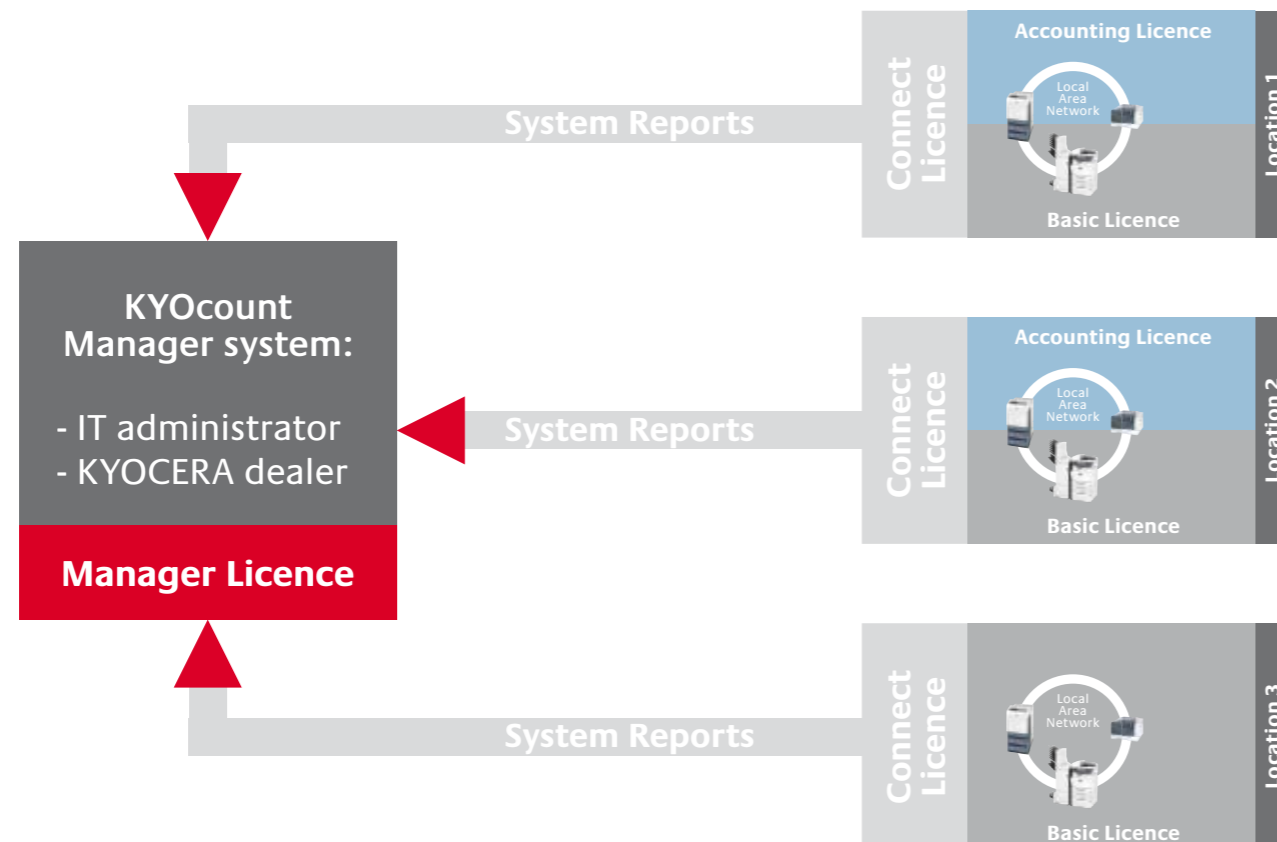
As a result of remote monitoring with KYOcount, your fleet will not only work more reliably, but also more productively and economically – across the entire company.

All notifications regarding for instance device malfunctions and maintenance can automatically be sent by e-mail to the IT administrator and service provider.

# THE LICENCE FOR BETTER SERVICE.

Naturally, you can also outsource your fleet management. The functionality will remain the same for you, with the difference that a connection between your local KYOcount system and your KYOCERA service partner will be established via a Connect and Manager Licence. Your KYOCERA service partner will then be able to remotely monitor your fleet – a crucial advantage for you, because you will profit from a well-managed and perfectly tuned fleet in combination with proactive service. Thus, decisions concerning such issues as toner deliveries and maintenance cycles will be made proactively in order to keep your fleet running smoothly at all times.

## REMOTE MONITORING WITH KYOCOUNT:



## KYOCOUNT LICENCES AND EXAMPLES OF USE AT A GLANCE:

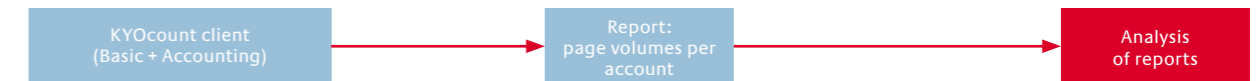
### ▶ **Basic Licence:**

The Basic Licence offers the monitoring of all networked or local printers, copiers and multifunctionals in real time.



### ▶ **Accounting Licence:**

The Accounting Licence extends the functionality with comprehensive accounting functions. It supports KYOCERA devices with internal accounting functionality.



### ▶ **Connect Licence: for connecting a KYOcount Basic to a KYOcount Manager system**

The Connect Licence enables the transmission of KYOcount system reports from a KYOcount Basic system to a Manager system.



### ▶ **Manager Licence: for remote fleet monitoring**

The KYOcount Manager Licence enables the designated administrator or external service partner to receive and manage KYOcount system reports. Irrespective of the amount of Basic or Accounting Licences, only one Manager Licence is required.



## COUNT ON US.

As one of the leading manufacturers of office document solutions, KYOCERA is committed to delivering consistently high-quality products and services. We not only provide you with the most reliable hardware and software, but also offer exceptional service, comprehensive consulting and tailor-made financing. And even if you may never need it, the Basic and Manager Licences from KYOcount 5.0 come with a 1-year professional KYOsupport package, for fast help. Whatever your needs – you can count on us. Want to know more? Simply get in touch with your local KYOCERA business partner.